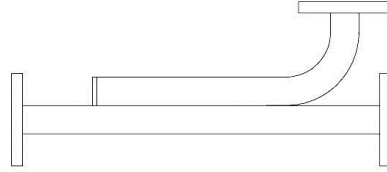




# Directional Coupler Waveguide

## Directional Coupler Waveguide (WHC-XX Type)



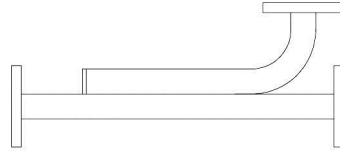
### WR284 to WR62

P/N	Freq. Range (GHz)	Freq. Sensitivity (dB)	Waveguide	Coupling (dB)	Coupling Accuracy (dB)	Directivity (dB) Min.	VSWR Mainline	VSWR Second line	Flange	Material
284WHC-XX	2.60-3.95	±0.7	WR284	3/6/ 10/20/30	±0.7	30	1.10	1.25	FDP32/ FDM32	Al/Cu
229WHC-XX	3.30-4.90	±0.7	WR229	3/6/ 10/20/30	±0.7	30	1.10	1.25	FDP40/ FDM40	Al/Cu
187WC-XX	3.95-5.85	±0.7	WR187	3/6/ 10/20/30	±0.7	30	1.10	1.25	FDP48/ FDM48	Al/Cu
159WHC-XX	4.90-7.05	±0.7	WR159	3/6/ 10/20/30	±0.7	30	1.10	1.25	FDP58/ FDM58	Al/Cu
137WHC-XX	5.85-8.20	±0.7	WR137	3/6/ 10/20/30	±0.7	30	1.10	1.25	FDP70/ FDM70	Al/Cu
112WHC-XX	7.05-10.0	±0.7	WR112	3/6/ 10/20/30	±0.7	30	1.10	1.25	FBP84/ FBM84/ FBE84	Al/Cu
90WHC-XX	8.20-12.4	±0.7	WR90	3/6/ 10/20/30	±0.7	30	1.10	1.25	FBP100/ FBM100/ FBE100	Al/Cu
75WHC-XX	10.0-15.0	±0.7	WR75	3/6/ 10/20/30	±0.7	30	1.10	1.25	FBP120/ FBM120/ FBE120	Al/Cu
62WHC-XX	12.4-18.0	±0.7	WR62	3/6/ 10/20/30	±0.7	30	1.10	1.25	FBP140/ FBM140/ FBE140	Al/Cu



# Directional Coupler Waveguide

## Directional Coupler Waveguide (WHC-XX Type)



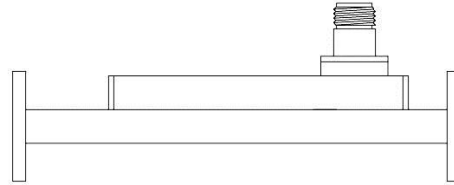
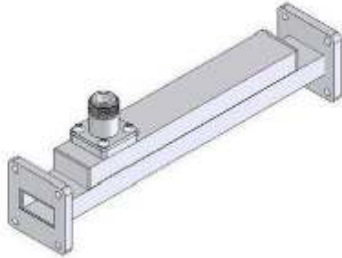
### WR51 to WR34

P/N	Freq. Range (GHz)	Freq. Sensitivity (dB)	Waveguide	Coupling (dB)	Coupling Accuracy (dB)	Directivity (dB) Min.	VSWR Mainline	VSWR Second line	Flange	Material
51WHC-XX	15.0-22.0	±0.7	WR51	3/6/ 10/20/30	±0.7	30	1.10	1.25	FBP180/ FBM180/ FBE180	Cu
42WHC-XX	18.0-26.5	±0.9	WR42	3/6/ 10/20/30	±1.0	30	1.15	1.30	FBP220/ FBM220/ FBE220	Cu
34WHC-XX	22.0-33.0	±0.9	WR34	3/6/ 10/20/30	±1.0	30	1.15	1.50	FBP260/ FBM260/ FBE260	Cu
28WHC-XX	26.5-40.0	±0.9	WR28	3/6/ 10/20/30	±1.0	30	1.15	1.50	FBP320/ FBM320/ FBE320	Cu
22WHC-XX	33.0-50.0	±0.9	WR22	10/20/30	±1.3	20	1.15	1.50	FUGP400	Cu
19WHC-XX	40.0-60.0	±0.9	WR19	10/20/30	±1.3	20	1.15	1.50	FUGP500	Cu
15WHC-XX	50.0-75.0	±0.9	WR15	10/20/30	±1.3	20	1.20	1.50	FUGP620	Cu
12WHC-XX	60.0-90.0	±0.9	WR12	10/20/30	±1.3	20	1.20	1.50	FUGP740	Cu
10WHC-XX	75.0-110.0	±0.9	WR10	10/20/30	±1.3	20	1.20	1.50	FUGP900	Cu



# Directional Coupler Waveguide

## Directional Coupler Waveguide (WHCN-XX Type)



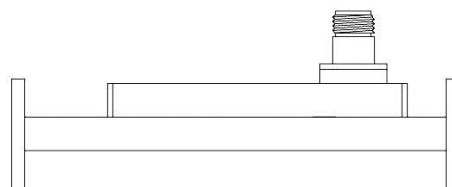
### WR430 to WR112

P/N	Frequency Range (GHz)	Freq. Sensitivity (dB)	Waveguide	Coupling (dB)	Coupling Accuracy (dB)	Directivity (dB) Min.	VSWR Mainline	VSWR Second line	Flange	Material
430WHCN-XX	1.70-2.60	±0.7	WR430	10/20/30	±0.9	30	1.10	1.25	FDP22/ FDM22	Al/Cu
340WHCN-XX	2.20-3.30	±0.7	WR340	10/20/30	±0.9	30	1.10	1.25	FDP26/ FDM26	Al/Cu
284WHCN-XX	2.60-3.95	±0.7	WR284	3/6/ 10/20/30	±0.7	30	1.10	1.25	FDP32/ FDM32	Al/Cu
229WHCN-XX	3.30-4.90	±0.7	WR229	3/6/ 10/20/30	±0.7	30	1.10	1.25	FDP40/ FDM40	Al/Cu
187WHCN-XX	3.95-5.85	±0.7	WR187	3/6/ 10/20/30	±0.7	30	1.10	1.25	FDP48/ FDM48	Al/Cu
159WHCN-XX	4.90-7.05	±0.7	WR159	3/6/ 10/20/30	±0.7	30	1.10	1.25	FDP58/ FDM58	Al/Cu
137WHCN-XX	5.85-8.20	±0.7	WR137	3/6/ 10/20/30	±0.7	30	1.10	1.25	FDP70/ FDM70	Al/Cu
112WHCN-XX	7.05-10.0	±0.7	WR112	3/6/ 10/20/30	±0.7	30	1.10	1.25	FBP84/ FBM84/ FBE84	Al/Cu



## Directional Coupler Waveguide

### Directional Coupler Waveguide (WHCN-XX Type)



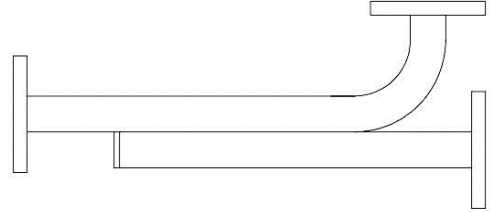
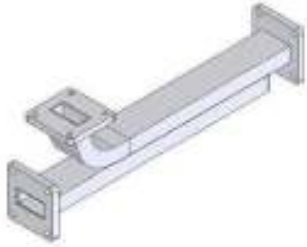
#### WR90 to WR28

P/N	Frequency Range (GHz)	Freq. Sensitivity (dB)	Waveguide	Coupling (dB)	Coupling Accuracy (dB)	Directivity (dB) Min.	VSWR Mainline	VSWR Second line	Flange	Material
90WHCN-XX	8.20-12.4	±0.7	WR90	3/6/ 10/20/30	±0.7	30	1.10	1.25	FBP100/ FBM100/ FBE100	Al/Cu
75WHCS-XX	10.0-15.0	±0.7	WR75	3/6/ 10/20/30	±0.7	30	1.10	1.25	FBP120/ FBM120/ FBE120	Al/Cu
62WHCS-XX	12.4-18.0	±0.7	WR62	3/6/ 10/20/30	±0.7	30	1.10	1.25	FBP140/ FBM140/ FBE140	Al/Cu
51WHCS-XX	15.0-22.0	±0.7	WR51	3/6/ 10/20/30	±0.7	30	1.10	1.25	FBP180/ FBM180/ FBE180	Cu
42WHCS-XX	18.0-26.5	±0.9	WR42	3/6/ 10/20/30	±1.0	30	1.15	1.30	FBP220/ FBM220/ FBE220	Cu
34WHCS-XX	22.0-33.0	±0.9	WR34	3/6/ 10/20/30	±1.0	30	1.15	1.50	FBP260/ FBM260/ FBE260	Cu
28WHCK-XX	26.5-40.0	±0.9	WR28	3/6/ 10/20/30	±1.0	30	1.15	1.50	FBP320/ FBM320/ FBE320	Cu



# Directional Coupler Waveguide

## Directional Coupler Waveguide (WHIC-XX Type)



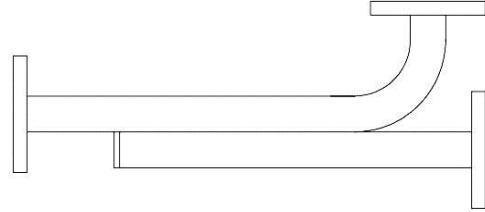
### WR284 to WR75

P/N	Frequency Range (GHz)	Freq. Sensitivity (dB)	Waveguide	Coupling (dB)	Coupling Accuracy (dB)	Directivity (dB) Min.	VSWR Mainline	VSWR Second line	Flange	Material
284WHIC-XX	2.60-3.95	±0.7	WR284	3/6/10/20/30	±0.7	30	1.10	1.25	FDP32/ FDM32	Al/Cu
229WHIC-XX	3.30-4.90	±0.7	WR229	3/6/10/20/30	±0.7	30	1.10	1.25	FDP40/ FDM40	Al/Cu
187WHIC-XX	3.95-5.85	±0.7	WR187	3/6/10/20/30	±0.7	30	1.10	1.25	FDP48/ FDM48	Al/Cu
159WHIC-XX	4.90-7.05	±0.7	WR159	3/6/10/20/30	±0.7	30	1.10	1.25	FDP58/ FDM58	Al/Cu
137WHIC-XX	5.85-8.20	±0.7	WR137	3/6/10/20/30	±0.7	30	1.10	1.25	FDP70/ FDM70	Al/Cu
112WHIC-XX	7.05-10.0	±0.7	WR112	3/6/10/20/30	±0.7	30	1.10	1.25	FBP84/ FBM84/ FBE84	Al/Cu
90WHIC-XX	8.20-12.4	±0.7	WR90	3/6/10/20/30	±0.7	30	1.10	1.25	FBP100/ FBM100/ FBE100	Al/Cu
75WHIC-XX	10.0-15.0	±0.7	WR75	3/6/10/20/30	±0.7	30	1.10	1.25	FBP120/ FBM120/ FBE120	Al/Cu



# Directional Coupler Waveguide

## Directional Coupler Waveguide (WHIC-XX Type)



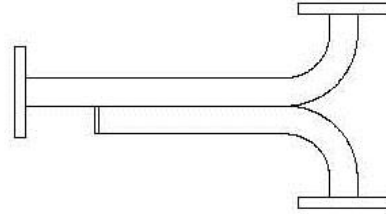
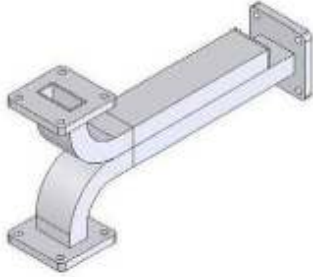
### WR62 to WR28

P/N	Frequency Range (GHz)	Freq. Sensitivity (dB)	Waveguide	Coupling (dB)	Coupling Accuracy (dB)	Directivity (dB) Min.	VSWR Mainline	VSWR Second line	Flange	Material
62WHIC-XX	12.4-18.0	±0.7	WR62	3/6/ 10/20/30	±0.7	30	1.10	1.25	FBP140/ FBM140/ FBE140	Al/Cu
51WHIC-XX	15.0-22.0	±0.7	WR51	3/6/ 10/20/30	±0.7	30	1.10	1.25	FBP180/ FBM180/ FBE180	Al/Cu
42WHIC-XX	18.0-26.5	±0.9	WR42	3/6/ 10/20/30	±1.0	30	1.15	1.30	FBP220/ FBM220/ FBE220	Al/Cu
34WHIC-XX	22.0-33.0	±0.9	WR34	3/6/ 10/20/30	±1.0	30	1.15	1.50	FBP260/ FBM260/ FBE260	Cu
28WHIC-XX	26.5-40.0	±0.9	WR28	3/6/ 10/20/30	±1.0	30	1.15	1.50	FBP320/ FBM320/ FBE320	Al/Cu



# Directional Coupler Waveguide

## Directional Coupler Waveguide (WHYC-XX Type)



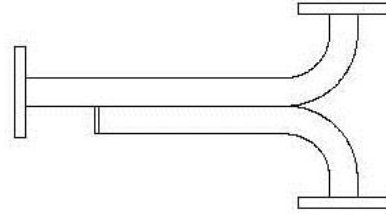
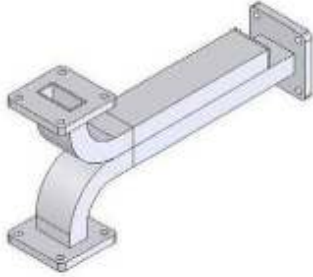
### WR284 to WR75

P/N	Frequency Range (GHz)	Freq. Sensitivity (dB)	Waveguide	Coupling (dB)	Coupling Accuracy (dB)	Directivity (dB) Min.	VSWR Mainline	VSWR Second line	Flange	Material
284WHYC-XX	2.60-3.95	±0.7	WR284	3/6/ 10/20/30	±0.7	30	1.10	1.25	FDP32/ FDM32	Al/Cu
229WHYC-XX	3.30-4.90	±0.7	WR229	3/6/ 10/20/30	±0.7	30	1.10	1.25	FDP40/ FDM40	Al/Cu
187WHYC-XX	3.95-5.85	±0.7	WR187	3/6/ 10/20/30	±0.7	30	1.10	1.25	FDP48/ FDM48	Al/Cu
159WHYC-XX	4.90-7.05	±0.7	WR159	3/6/ 10/20/30	±0.7	30	1.10	1.25	FDP58/ FDM58	Al/Cu
137WHYC-XX	5.85-8.20	±0.7	WR137	3/6/ 10/20/30	±0.7	30	1.10	1.25	FDP70/ FDM70	Al/Cu
112WHYC-XX	7.05-10.0	±0.7	WR112	3/6/ 10/20/30	±0.7	30	1.10	1.25	FBP84/ FBM84/ FBE84	Al/Cu
90WHYC-XX	8.20-12.4	±0.7	WR90	3/6/ 10/20/30	±0.7	30	1.10	1.25	FBP100/ FBM100/ FBE100	Al/Cu
75WHYC-XX	10.0-15.0	±0.7	WR75	3/6/ 10/20/30	±0.7	30	1.10	1.25	FBP120/ FBM120/ FBE120	Al/Cu



# Directional Coupler Waveguide

## Directional Coupler Waveguide (WHYC-XX Type)



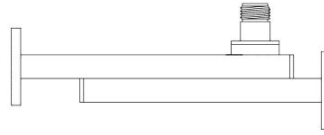
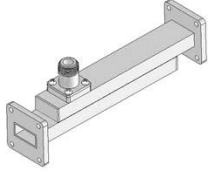
### WR62 to WR28

P/N	Frequency Range (GHz)	Freq. Sensitivity (dB)	Waveguide	Coupling (dB)	Coupling Accuracy (dB)	Directivity (dB) Min.	VSWR Mainline	VSWR Second line	Flange	Material
62WHYC-XX	12.4-18.0	±0.7	WR62	3/6/ 10/20/30	±0.7	30	1.10	1.25	FBP140/ FBM140/ FBE140	Al/Cu
51WHYC-XX	15.0-22.0	±0.7	WR51	3/6/ 10/20/30	±0.7	30	1.10	1.25	FBP180/ FBM180/ FBE180	Cu
42WHYC-XX	18.0-26.5	±0.9	WR42	3/6/ 10/20/30	±1.0	30	1.15	1.30	FBP220/ FBM220/ FBE220	Cu
34WHYC-XX	22.0-33.0	±0.9	WR34	3/6/ 10/20/30	±1.0	30	1.15	1.50	FBP260/ FBM260/ FBE260	Cu
28WHYC-XX	26.5-40.0	±0.9	WR28	3/6/ 10/20/30	±1.0	30	1.15	1.50	FBP320/ FBM320/ FBE320	Cu



# Directional Coupler Waveguide

## Directional Coupler Waveguide (WHICN-XX Type)



### WR284 to WR28

P/N	Frequency Range (GHz)	Waveguide	Coupling (dB)	Freq. Sensitivity (dB)	Directivity (dB) Min.	VSWR Mainline	VSWR Second line	Flange	Material
284WHICN-XX	2.60-3.95	WR284	3/6/ 10/20/30	±0.7	30	1.10	1.25	FDP32/FDM32	Al/Cu
229WHICN-XX	3.30-4.90	WR229	3/6/ 10/20/30	±0.7	30	1.10	1.25	FDP40/FDM40	Al/Cu
187WHICN-XX	3.95-5.85	WR187	3/6/ 10/20/30	±0.7	30	1.10	1.25	FDP48/FDM48	Al/Cu
159WHICN-XX	4.90-7.05	WR159	3/6/ 10/20/30	±0.7	30	1.10	1.25	FDP58/FDM58	Al/Cu
137WHICN-XX	5.85-8.20	WR137	3/6/ 10/20/30	±0.7	30	1.10	1.25	FDP70/FDM70	Al/Cu
112WHICN-XX	7.05-10.0	WR112	3/6/ 10/20/30	±0.7	30	1.10	1.25	FBP84/FBM84/FBE84	Al/Cu
90WHICN-XX	8.20-12.4	WR90	3/6/ 10/20/30	±0.7	30	1.10	1.25	FBP100/FBM100/FBE100	Al/Cu
75WHICS-XX	10.0-15.0	WR75	3/6/ 10/20/30	±0.7	30	1.10	1.25	FBP120/FBM120/FBE120	Al/Cu
62WHICS-XX	12.4-18.0	WR62	3/6/ 10/20/30	±0.7	30	1.10	1.25	FBP140/FBM140/FBE140	Al/Cu
51WHICS-XX	15.0-22.0	WR51	3/6/ 10/20/30	±0.7	30	1.10	1.25	FBP180/FBM180/FBE180	Cu
42WHICS-XX	18.0-26.5	WR42	3/6/ 10/20/30	±0.9	30	1.15	1.30	FBP220/FBM220/FBE220	Cu
34WHICS-XX	22.0-33.0	WR34	3/6/ 10/20/30	±0.9	30	1.15	1.50	FBP260/FBM260/FBE260	Cu
28WHICS-XX	26.5-40.0	WR28	3/6/ 10/20/30	±0.9	30	1.15	1.50	FBP320/FBM320/FBE320	Cu

Specification may change without notice



188 Technolgoy Drive, Unit H Irvine, CA 92618  
 TEL: 949-453-9888 ♦ FAX: 949-453-8889 ♦ Email: sales@aacix.com