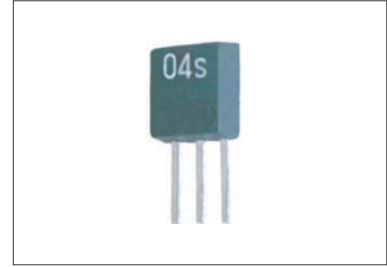


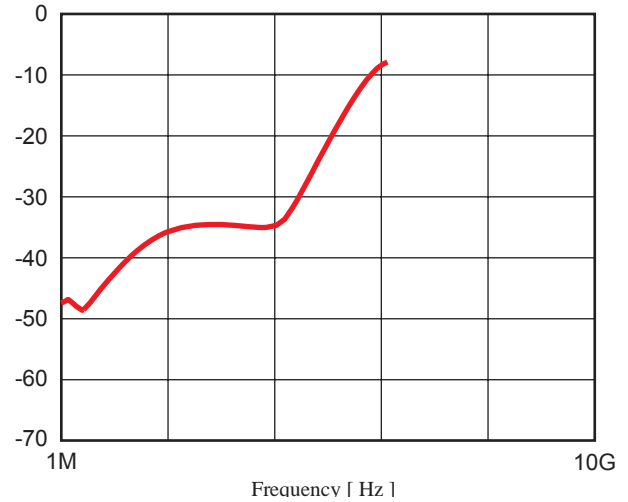
## Wide Band RF Eliminate Filter **KHLC-04s**



### Feature

- Single in Line Package
- Broad Bandwidth: 100 kHz to 5.0 GHz (-20 dB)
- Comply with Large Current (1.5 A)
- High Speed Orientation and Harmonic Wave
- Custom Designs Available

### Isolation vs Frequency



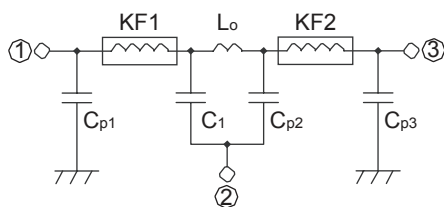
### Absolute Maximum Rating

Parameter	Value (max.)	Unit
Rated Current	1,500	mA
Rated Voltage	10	V
Soldering Temperature	+240 (8 sec)	C
Operating Temperature	-40 ~ +85	C
Storage Temperature	-65 ~ +150	C

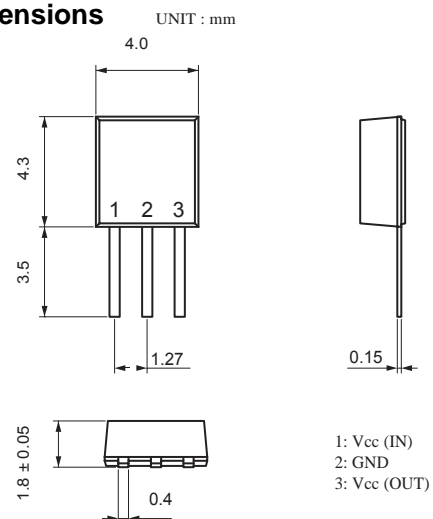
### Electrical Specifications

Parameter	Value	Condition
Band Width	100 kHz ~ 5.0 GHz (Typ.)	-20 dB
	280 kHz ~ 3.8 GHz (Typ.)	-30 dB
	350 kHz ~ 1.2 GHz (Typ.)	-40 dB
DC Resistance	0.13 Ω max.	-

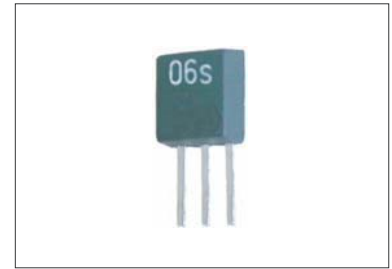
### Schematics



### Dimensions



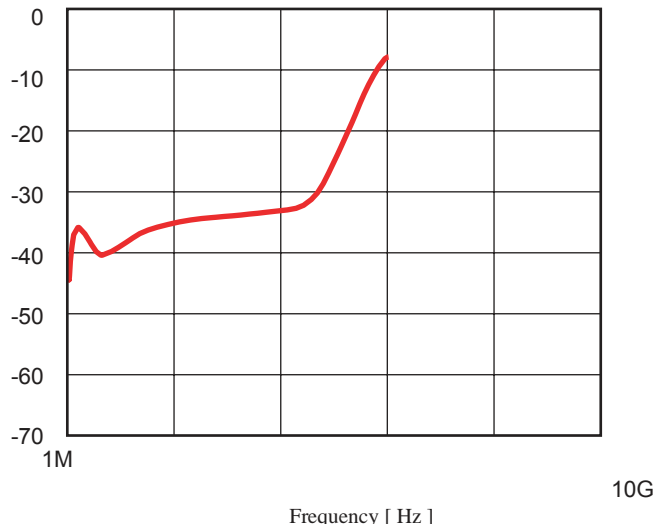
## Wide Band RF Eliminate Filter **KHLC-06s**



### Feature

- Single in Line Package
- Broad Bandwidth: 100 kHz to 5.2 GHz (-20 dB)
- Comply with Large Current (1.75 A)
- High Speed Orientation and Harmonic Wave
- Custom Designs Available

### Isolation vs Frequency



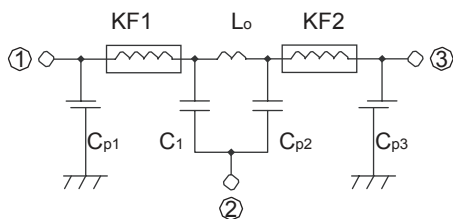
### Absolute Maximum Rating

Parameter	Value (max.)	Unit
Rated Current	1,750	mA
Rated Voltage	10	V
Soldering Temperature	+240 (8 sec)	C
Operating Temperature	-40 ~ +85	C
Storage Temperature	-65 ~ +150	C

### Electrical Specifications

Parameter	Value	Condition
Band Width	100kHz ~ 5.2GHz (Typ.)	-20 dB
	350kHz ~ 4.7GHz (Typ.)	-30 dB
DC Resistance	0.1 Ω max.	-

### Schematics



### Dimensions

UNIT : mm

