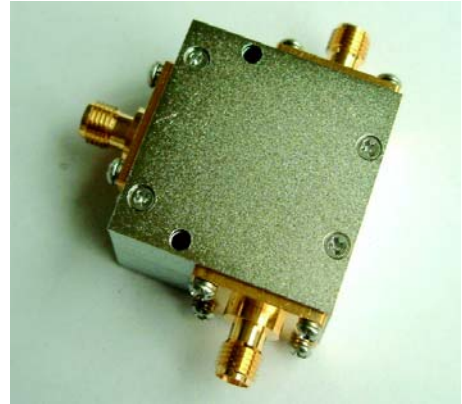
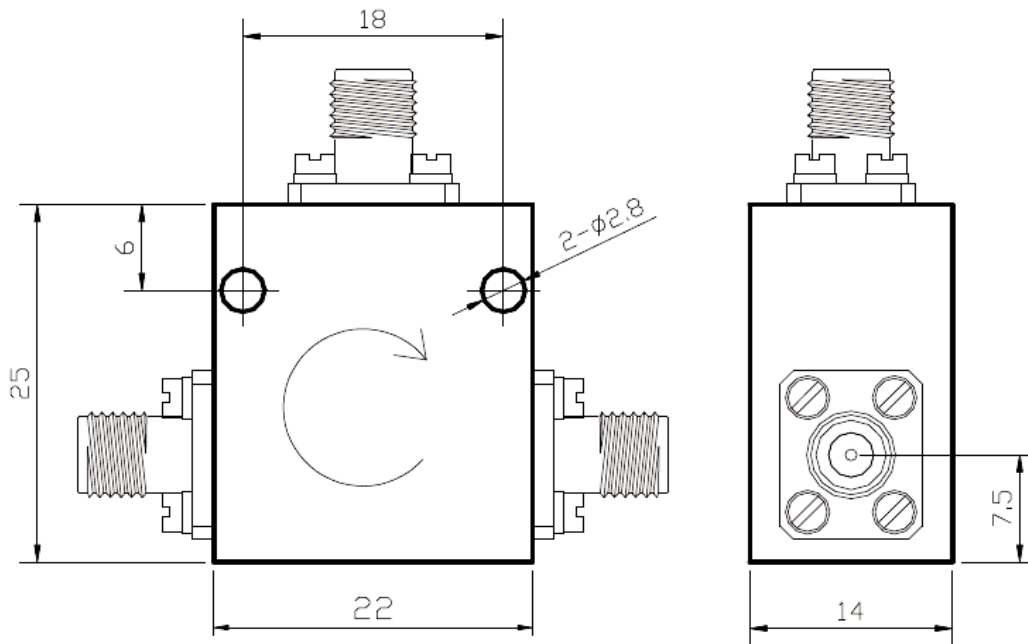


Technical Specification

Frequency Range(MHz)	2490-2690
Insertion Loss(dB)	0.4 max
Isolation(dB)	21 min
Forward Power(W)	5 CW
Reverse Power(W)	2 CW
VSWR	1.2
Connector	SMA-Female
Operating Temperature(°C)	-20~+70
Size(mm)	25x22x14
Net Weight(Kg)	0.04 Around



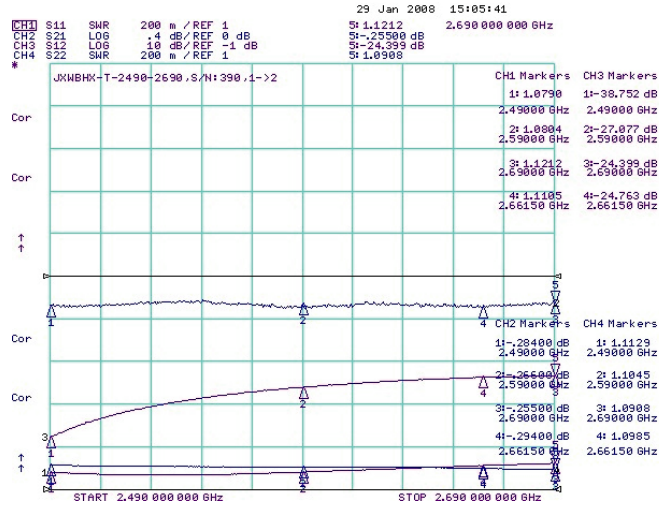
Outline Drawing (Size: mm)



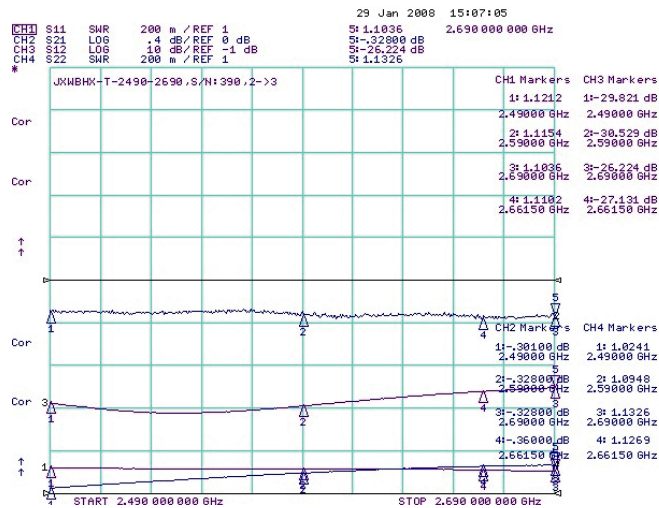


Test Results

Port1~2



Port2~3



Port3~1

